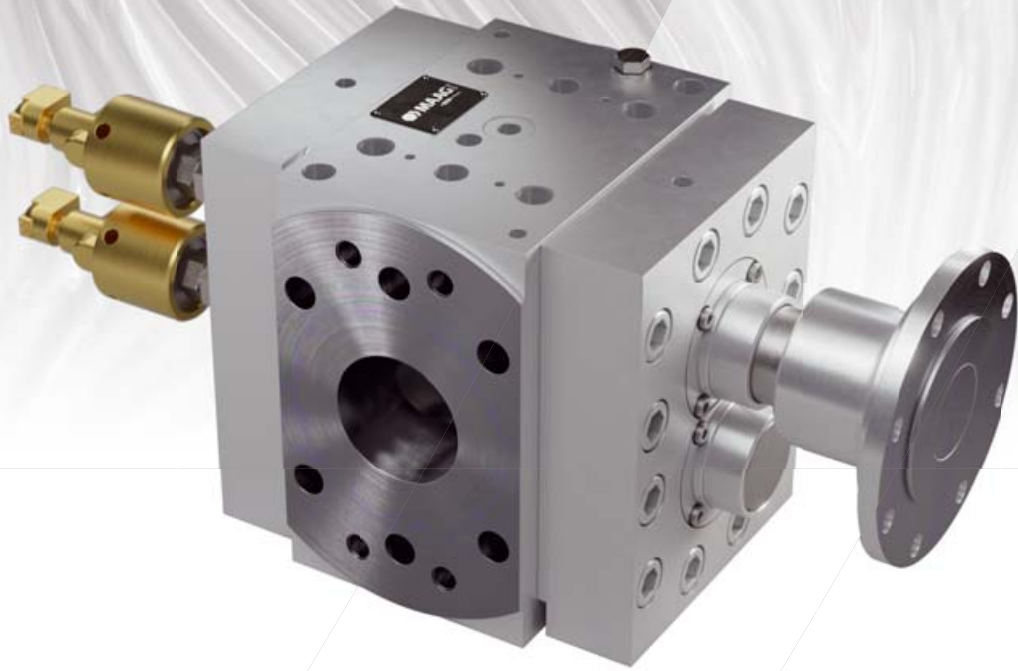


PUMP & FILTRATION SYSTEMS >



extrex⁶ ER

Booster pump for the
elastomeric processing industry



Elastomeric processing requires positive displacement devices that gently convey high viscosity rubber through the system. Specifically designed, low compression tooth design allow the extrex⁶ ER transfer, booster or metering gear pump to achieve both high pressure and low shear.

The rubber compound is conveyed with a constant, precise flow even at high discharge pressures – and this also for extremely dry or sticky compounds, where former pump generations reached their limits due to scorch. Additionally, their anyway high efficiency and long life span will extend unrivaled due to reduced internal friction.

Your GU benefits

- **+ 10 %** more spec. vol. than RV
- **+ 25 %** more wear resistant
- **+ 25 %** larger sealing surface

Your SP benefits

- **+ 26 %** more spec. vol. than RB
- **+ 14 %** more pressure
- **+ 25 %** more wear resistant
- **+ 25 %** larger sealing surface

extrex⁶ ER

Booster pump for the elastomeric processing industry

A range of typical pumping media

- Butadiene rubber
- Chloroprene rubber
- Ethylene-propylene-terpolymer rubber
- Nitril-butadiene rubber
- Styrene-butadiene rubber
- Natural rubber
- Others upon request

Accessories

- Base and base frame
- Adapter flange
- Sensors
- Support Cart and control Systems
- Drives

Options

- Various tolerance classes
- Choice of materials for every application
- Shaft cooling with contact protection
- Bearing lubrication with internal recirculation

Technical specifications:

Housing cover: Alloy-/Carbon Steel - other material on request

Gear shafts: Tool steel, special coatings

Bearing: Tool steel / special materials

Pump heating: Thermal water or oil

Viscosity: Up to 30'000 Pas

Mooney: Up to 120 ML(100)

Temperature: Up to 120 °C

Suction side: ■ Inlet pressure: up to 120 bar

extrex⁶ ER: Compatibility of parts and availability

Spares like shafts, bearings and sealing are not interchangeable with earlier extrex[®] generations. Interfaces of extrex⁶ ER models like drive hub, suction and discharge design are compatible to Generation 5 extrex[®] RV/RB while overall dimensions may deviate depending on size and application. The indicated flow capacity range and the maximum pressure of the gear pump is in general depending on characteristics of the medium conveyed.

Please contact MAAG Pump Systems AG product desk for elastomeric processing for specific application.

Model range	extrex ⁶ ER "size"-6 GU (General Use)			Classic RV
Δp	up to 250 bar			
Discharge pressure	up to 370 bar			
Pump size	Spec. Vol. (ccm)	Capacity (kg/h)	rpm (min)	ref. Pump size
40/50	48	15 - 160	55	45
50/63	96	30 - 280	45	56
63/80	194	60 - 470	40	70
80/100	385	120 - 860	35	90
100/125	764	240 - 1,200	30	110
125/160	1,545	480 - 2,000	25	140
160/200	3,082	960 - 3,200	20	180

Model range	extrex ⁶ ER "size"-6 SP (Super Pressure)			Classic RB
Δp	up to 400 bar			
Discharge pressure	up to 520 bar			
Pump size	Spec. Vol. (ccm)	Capacity (kg/h)	rpm (min)	ref. Pump size
40/32	31	10 - 120	55	45
50/40	61	15 - 190	45	56
63/50	122	30 - 290	40	70
80/63	242	60 - 530	35	90
100/80	489	120 - 740	30	110
125/100	966	240 - 1,200	25	140
160/125	1,980	480 - 1,980	20	180

